

shinkolite light guide panel lx875 (Edgelit Applications)

Mitsubishi Rayon Co., Ltd.

PRODUCT INTRODUCTION

Shinkolite LGP was developed specifically for edge lit illumination signage and displays, giving excellent brightness and evenness of illumination. Formulated with evenly dispersed diffusion particles resulting in bright and uniform illumination. The LGP can be illuminated by a variety of light sources, i.e., LED's, Fluorescent and cold cathode. The better the light source the better the panel will illuminate.

FEATURES & BENEFITS

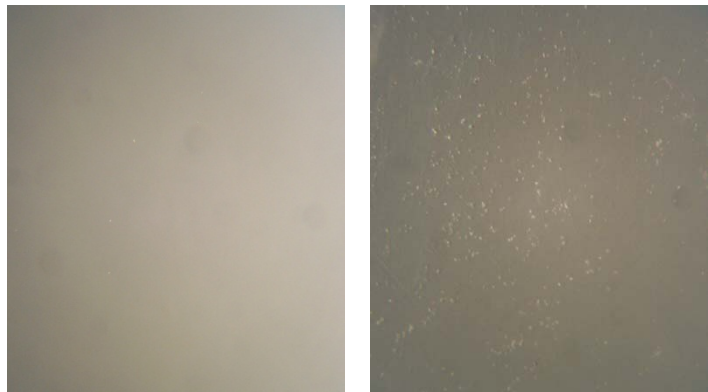
The Shinkolite LGP panel is the next generation of edge lit products.

- Brighter
- Thinner – available in .236 and .315" and therefore lighter
- Highest quality continuous cast acrylic
- Single or Double sided applications
- Indoor or Outdoor applications
- Even illumination
- Energy efficient, requiring less energy to illuminate large areas.
- ADA compliant – allows for ultra thin signage (less than 2" deep)

APPLICATIONS

- Illuminated Poster box
- Retail Displays
- Airport Signage
- Point of Purchase Displays
- Bus Shelter Advertising
- Way Finding Signage
- Interior Lighting

- Menu Board
- Trade Show Exhibits
- In-Floor Lighting



Microscope photography shows that light dispersion in the Light guide panel sheet (above left) sheet is much smoother and more consistent than in competitor products (above right).

PRODUCT AVAILABILITY

- Continuous Cast Acrylic Sheet
- Standard sheet size 51" x 108.375"
- Thickness .236, .315
- Color – Transparent
- Cut Sheets and other additional specification information available upon request.
- Also available for quote in thickness: .157 and .394

*For sales and Information,
please contact Jane Nash
1-800-4-LUCITE x 2426*

(JUL. 1, 2011)